



DuPont™ Cyrel® Solutions – EMEA

DuPont™ Cyrel® offers a broad range of flexographic solutions that optimize the quality, productivity and sustainability for printers/converters and tradeshops.



Flexography delivered

The Right Product for Every Packaging Application

DuPont Cyrel® offers a plate for every kind of flexographic printing for all flexographic printing applications, regardless of the substrate, design or complexity of your package.

Cyrel® is known for its detailed graphics, high impact colors and speed-to-market capabilities that empower your brand.

Key Industry segments:



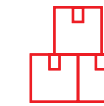
Flexible Packaging

We have a broad range plate offering for Flexible Packaging, where printing with Cyrel® plates will consistently give your package “sell on the shelf graphics”.



Tag and Label

We offer a wide variety of plates that will take care of all of your tag and label application. You can successfully print with UV inks to make your labels more vibrant on-shelf.



Corrugated

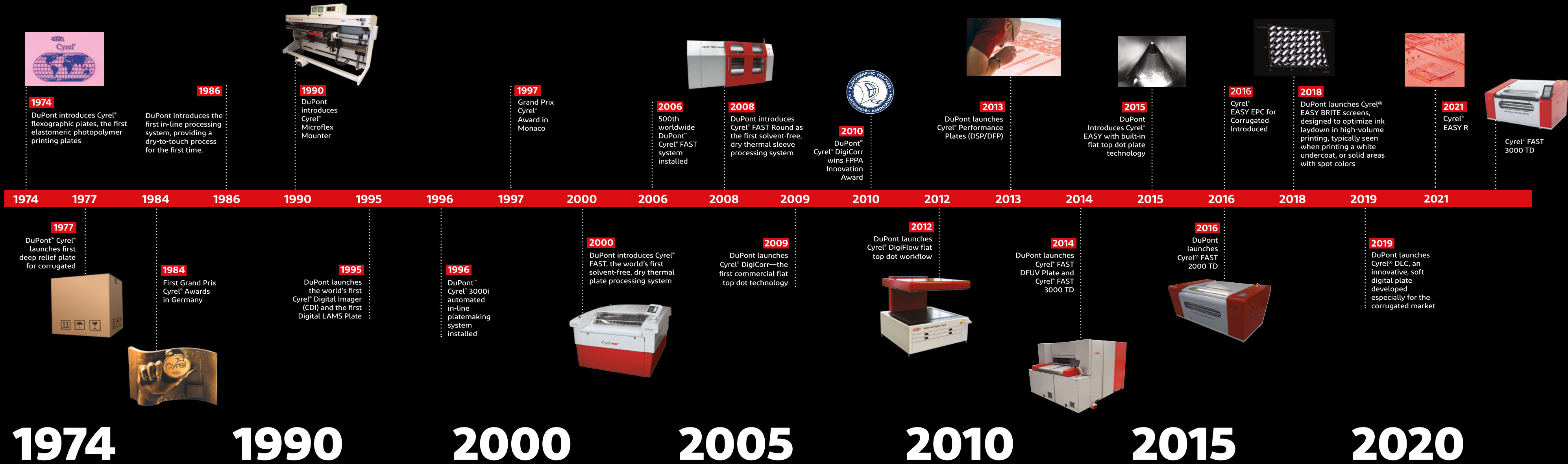
From bar codes on shipping boxes that scan right every time, to high impact graphics on point of purchase displays, our plates enable high-quality printing on corrugated substrates.



Folding Carton

Cyrel® plates for Beverage and Folding carton printing fulfilling the requirements for consistent quality and high volume jobs on demanding substrates and with waterbased or UV inks. Our compatibility with UV inks gives you brilliant colors which makes your designs pop.

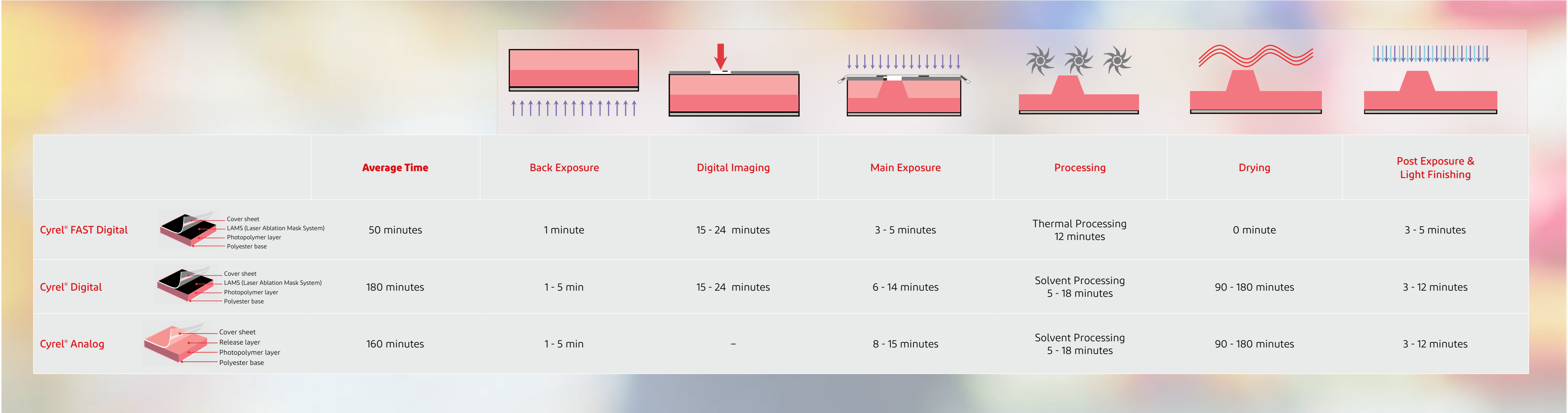
DuPont is committed to bringing new flexography innovation and solutions to the industry.



Platemaking workflows

At DuPont, we understand the challenges you face. That’s why we offer a vast array of Cyrel® flexographic platemaking solutions that address your needs for productivity and quality.

*examples based on most popular thermal and solvent thin plates



FAST Thermal

DuPont™ Cyrel® FAST technology brings your package to life, faster, cleaner and more reliably. We turn complicated operations into solutions and we work to make your business more efficient, robust and sustainable.

Smaller runs, faster turnarounds, minimizing environmental footprints and printing on new substrates are all possible with DuPont™ Cyrel® FAST.

Cyrel® FAST enabling what's next.



Faster processing

Cyrel® FAST thermal workflow is a complete hardware and consumable solution, enabling improved process control, product quality and consistency and up to a 75% reduction in plate-production time.



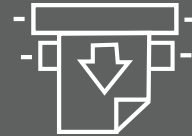
Smaller footprint

Cyrel® FAST thermal workflow features the smallest environmental footprint available today, reducing greenhouse gases by 53% and enabling a 63% reduction in non-renewable energy consumption.



Lower Costs

Cyrel® FAST thermal workflow can help save money and materials, reducing plate consumption by up to 15% compared to conventional methods and reducing waste-treatment and disposal costs thanks to the solvent-free process.



Improved Performance

Cyrel® FAST thermal workflow improves productivity by enabling faster setup times, higher press speeds and longer life of the print form.



Plate Portfolio

DuPont™ Cyrel®		Cyrel® FAST (Thermal) Plates								Cyrel® Digital Solvent Plates														Cyrel® Analog Solvent Plates	
		EFX	EFE	EFXR	EFER	DFUV	DFR	DFM		FDT	ESX	ESXQ	ESE	ESXR	ESER	EPR2	ESM	LSH	DPR	DS2	EPC	DPC	DEC	DLC	NEOS
Applications	Flexible Packaging	•	•	•	•		•	•	•	•	•	•	•	•	•	•	•	•	•					•	
	Tag & Label	•	•	•	•	•	•	•	•	•	•	•	•	•	•	•	•	•	•					•	
	Folding Carton	•		•			•	•	•	•	•		•		•	•	•	•	•					•	
	Corrugated Post Print																			•	•	•	•		•
	Corrugated Pre Print/Paper	•		•			•	•		•	•		•		•	•	•	•	•					•	•
	Beverage Carton	•		•			•	•	•	•	•		•		•	•	•	•	•					•	
Inks	UV	•	•	•	•	•	•	•	•	•	•	•	•	•	•	•	•	•	•					•	
	Solvent	•	•	•	•	•	•	•	•	•	•	•	•	•	•	•	•	•	•					•	
	Water	•	•	•	•	•	•	•	•	•	•	•	•	•	•	•	•	•	•	•	•	•	•	•	•
Dot Profile	Round Top Dot					•	•	•									•	•	•		•	•	•		
	Flat Top Dot	•	•	•	•				Analog	•	•	•	•	•	•	•				•				Analog	Analog
Durometer (ShA)	0.045 0.067 0.100 0.107 (1.14 1.70 2.54 2.72mm)	74-76 65-67 58-60 58-60	74-76 65-67 58-60 58-60	79-81 70-73 - -	79-81 70-73 - -	76 73 - -	78-80 70-72 - 64-66	70 58 48 48	76 68 55 -	74-76 65-67 58-60 -	74-76 65-67 58-60 -	74-76 63-65 58-60 -	79-81 70-73 - -	79-81 70-73 - -	78-80 72-74 - -	71 63 56 -	75 68 - -	76 69 - -	70 59 49 -	- - - -	- - - -	- - - -	- - - -	72 60 49 -	- - - -
	0.112 0.125 0.155 0.170 (2.84 3.18 3.94 4.32mm)	53-55 - - -	53-55 - - -	- - - -	- - - -	- - - -	- - - -	48 - - -	54 - - -	53-55 - - -	53-55 - - -	53-55 - - -	- - - -	- - - -	- - - -	55 - - -	- - - -	- - - -	47 - - -	37 37 36 -	38 37 36 -	38 37 36 36	31 30 28 28	48 - - -	- - 37 36
	0.185 0.197 0.217 0.237 0.250 (4.70 5.00 5.51 6.02 6.35mm)	- - - - -	- - - - -	- - - - -	- - - - -	- - - - -	- - - - -	- - - - -	- - - - -	- - - - -	- - - - -	- - - - -	- - - - -	- - - - -	- - - - -	- - - - -	- - - - -	- - - - -	- - - - -	- - - - -	- - - - -	- - - - -	- - - - -	36 - 35 35 34	

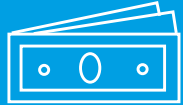
EASY Platform

With built-in flat top dots, the EASY plate platform was developed for customers who want to process a plate in a simplified workflow, while enabling print on a wide variety of substrates, all with optimum quality in highlights, solids and smooth vignettes.



Productivity

- Simplified workflow (no lamination)
- Consistency
- Quickly comes up to color
- Reduced errors – Reduced rework
- Impression latitude
- Plate-to-plate consistency in producing flat top dots



Cost Savings

- No need to invest in nitrogen exposure unit, special exposure technology or lamination equipment to get flat top dots



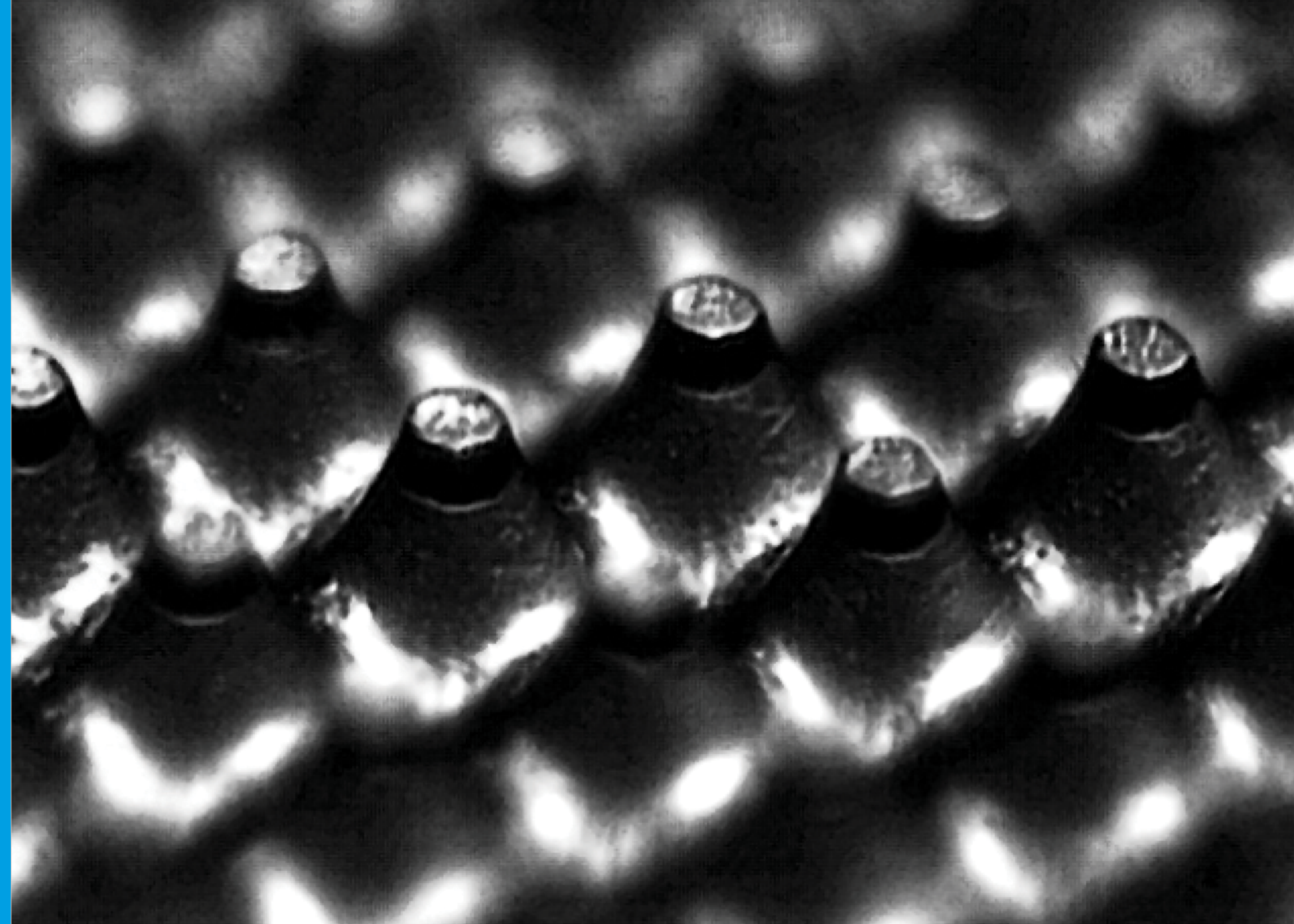
Quality

- High ink transfer and color saturation
- Improved mid-tones and highlights
- Print quality consistency throughout a run and from run-to-run



Press Performance

- Print consistency across multiple press locations
- Improved Solid ink density with excellent fade to zero
- Higher press speeds
- High durability on press



EASY BRITE Screens

Change how you see white.

A bright white takes the right combination of opacity, low mottle and low graininess. Cyrel® EASY BRITE Screens help deliver a superior white by balancing opacity, mottle and graininess.

To help printers identify the optimal point, DuPont developed the EASY BRITE Index™, a multidimensional measurement that combines opacity, mottle and graininess into a single number. The higher the index, the better your white. It's that EASY.



Higher Productivity

- Higher print quality
- More uniform ink laydown
- Eliminates trail edge void
- Improves opacity, reduces graininess and reduces mottle



Greater savings

- Use lower-volume aniloxes
- Run higher press speeds
- Eliminate need for a specific white plate graininess and reduces mottle



EASY setup

- Works with existing setups
- Available for Pixel+ and Non-Pixel+ configurations
- No hardware to purchase



Cloud based solution

- Available in the cloud
- In various resolutions - 2540 and 4000 dpi



Global Reach

A global presence that is close to our customers

Innovation Centers

Wilmington

Chestnut Run Plaza Building 702
Wilmington, Delaware 19801, USA
Tel: (1) 800 441 7515
Tel: (1) 302 774 1000

Neu Isenburg

Hugenottenallee 175
63263 Neu Isenburg, Germany
Tel: (+49) 6102 18-0

São Paulo

Av. Sylvio Honório Penteado, 370, T5
Barueri – SP CEP: 06460-025, Brazil
Tel: 0800 047 5006

Shanghai

No. 600, Cailun Road, Zhangjiang Hi-Tech Park,
Pudong New District, Shanghai 201203, PRC
Tel: (86) 21 3862 2000



For other DuPont Cyrel® Solutions office locations and contacts, please visit [About Us](#) page.



cyrel.com

No freedom from infringement of any patent or trademark owned by DuPont or others is to be inferred. Because use conditions and applicable laws may differ from one location to another and may change with time, Customer is responsible for determining whether products and the information in this document are appropriate for Customer's use and for ensuring that Customer's workplace and disposal practices are in compliance with applicable laws and other government enactments. The product shown in this literature may not be available for sale and/or available in all geographies where DuPont is represented. The claims made may not have been approved for use in all countries. DuPont assumes no obligation or liability for the information in this document. References to "DuPont" or the "Company" mean the DuPont legal entity selling the products to Customer unless otherwise expressly noted. NO WARRANTIES ARE GIVEN; ALL IMPLIED WARRANTIES OF MERCHANTABILITY OR FITNESS FOR A PARTICULAR PURPOSE ARE EXPRESSLY EXCLUDED.

DuPont™, the DuPont Oval Logo, and all trademarks and service marks denoted with ™, sm or ® are owned by affiliates of DuPont de Nemours, Inc. All rights reserved.

EI00366 0421 CDP